



# Delta

## Entrance control / Sliding gate

This single or double leaf sliding gate boasts the latest technology and has been successfully tested for all relevant safety norms (EN and BS).

The gate frame is square hollow section steel with a choice of vertical square bar (Athos) or round bar (Heracles/Atlas). Available in a wide range of widths and heights, the cantilever design has no exposed ground track or wheels to get blocked by dirt or snow. This guarantees trouble-free open/close movements and reduces maintenance.

The main gate transport beam is lightweight aluminum, and the complete construction is perfectly counterbalanced to allow easy manual or motor-driven operation. All gate surfaces are extremely robust with high quality galvanized or powder coated finishes (in a wide choice of colours).

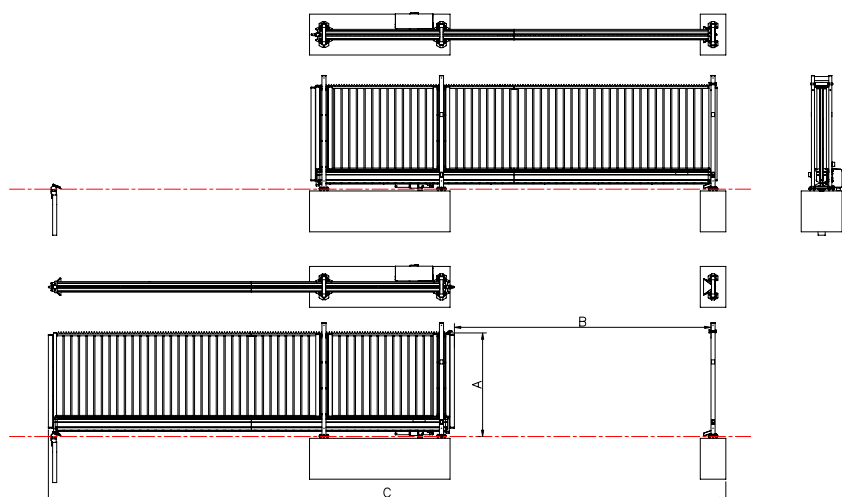
Ideal for harbour entrances, plus busy industrial and commercial locations where a wide entrance is required.

- **Plug-and-Play for easy installation and operation**
- **Lightweight and low maintenance design**
- **Very wide opening width (maximum 19 metres)**
- **Easily integrated with security options**
- **Robust steel frame with choice of colour and vertical bar infill**

Experts in perimeter protection

**HERAS**

## Drawings



## Technical specifications (dimensions in mm)

Type (single leaf)	Open width (B)		Total width (C)	Gate heights (A)						
	Manual	Automated		1000	1250	1500	1800	2000	2300	2500
Delta 30	3172	3072	8858	✓	✓	✓	✓	✓	✓	✓
Delta 40	4222	4122	10958	✓	✓	✓	✓	✓	✓	✓
Delta 50	5122	5022	13258	✓	✓	✓	✓	✓	✓	✓
Delta 60	6022	5922	15058	✓	✓	✓	✓	✓	✓	✓
Delta 70	7322	7222	18158	✓	✓	✓	✓	✓	✓	✓
Delta 85	8522	8422	20558	✓	✓	✓	✓	✓	✓*	✓*
Delta 95	9422	9322	22358	✓	✓	✓	✓	✓*	✓*	

Type (double leaf)	Open width (B)		Total width (C)	Gate heights (A)						
	Manual	Automated		1000	1250	1500	1800	2000	2300	2500
Delta 30 30	6410	6319	17282	✓	✓	✓	✓	✓	✓	✓
Delta 40 40	8510	8419	21482	✓	✓	✓	✓	✓	✓	✓
Delta 50 50	10310	10219	26082	✓	✓	✓	✓	✓	✓	✓
Delta 60 60	12110	12019	29682	✓	✓	✓	✓	✓	✓	✓
Delta 70 70	14710	14619	35882	✓	✓	✓	✓	✓	✓	✓
Delta 85 85	17110	17019	40682	✓	✓	✓	✓	✓	✓*	✓*
Delta 95 95	18910	18819	44282	✓	✓	✓	✓	✓*	✓*	

\* not available with Athos (vertical square bar) infill

<b>Material</b>	Frame: heavy steel Beam: aluminum
<b>Colour (other colours available upon request)</b>	RAL 6005 (moss green) RAL 6009 (fir green) RAL 7016 (anthracite grey) RAL 9005 (jet black)
<b>Finish</b>	Galvanized (hot dip) Powdercoating (80 µm thick; 80 buchholz hardness)
<b>Leaf</b>	Single or double
<b>Infill</b>	Vertical round/square bars; 143 mm centre-to-centre (136 mm option)
<b>Drive</b>	Manual or electric motor (see separate HMD datasheet)

## Norms

- Certificates (CE)
- Declaration of Performance (DoP)
  - Construction Products Regulation (CPR) (305/2011)
  - EN 13241
  - EN 12424 (Wind class 3)
- Declaration of Conformity (DoC)
  - Directives machines (2006/42/EC)
  - EN 13241
  - EMC Directive (2014/30/EU)

## Suggested accessories / products

- Access control system
- HMD (Heras Motor Drive)

## Ordering information

Contact your local Heras office for precise ordering details.