

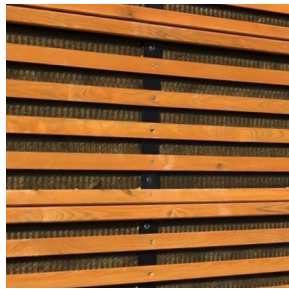
# Noistop® Wood

## PRODUCT DATA SHEET

### Acoustic fence modules



**Elba Natural**



**Elba Brown**



**Elba Reflect**

### Material description

Acoustic fence modules made of wood, aluminium construction, ROCKWOOL stone wool (core and acoustic material) and black PE fabric.

### Noise damping features

Features	Value
<b>Sound insulation</b>	21dB (B2), Reflect: 25 dB (B3) according to EN 1793-2
<b>Sound absorption</b>	All versions: 10-11dB according to EN 1793-1 (A3) <sup>1</sup>

### Product dimensions<sup>2</sup>

Lenght [cm]	Height [cm]	Width [cm]	Weight per element [kg]		Element per pallet
			Elba	Reflect	
100	100	17	32	38-40	12-14
200	100	17	64	71-77	6-7
200	90	17	57	64-69	6-7
200	45	17	29	32-35	12-14

1. Reflect: only the stone wool side is absorbing.

2. Selected other sizes are available upon request.

## Storage condition advice

Preferably stored inside. If stored outside:

- Stack max. 2 pallets on each other.
- Protect against high quantities of UV to prevent “natural ageing” of exposed products only, especially when stored for longer periods of time.
- Preferably cover the top of the product package to prevent unnecessary exposure to elements by roof or single cover.

## Decorative surface

Value
Black PE fabric (Polythene)

## Wood

Features	Value
<b>Wood</b>	1st Class European Pine Wood
<b>Impregnation</b>	According to EN 335:2013 All wood is chrome free impregnated and has a natural colour.
<b>Surface finish</b>	Optionally available in Brown RAL 8003 and on request in Anthracite RAL 7015

## Mechanical strength

Features	Value
<b>Wind load resistance</b>	Tested to maximum load 1.0 kN/m <sup>2</sup> according to EN1794-1

## Durability

Noistop Wood is built out of a core of highly durable ROCKWOOL stone wool with a typical service lifetime of over 30 years and aluminum supports. The wood itself is high pressure impregnated according EN 335: 2013 offering Use Class 3 “outdoor applications above the ground” with a typical durability of 10-15 years. Please note that durability of the product strongly depends on the specific environmental characteristics in which the product is applied.

## ROCKWOOL Danmark A/S

Hovedgaden 501

DK-2640 Hedehusene

Tel: +45 4656 1616

[www.noistop.rockwool.com](http://www.noistop.rockwool.com)

Noistop® Wood is EU Design Protected at EUIPO (European Union Intellectual Property Office).

The greatest possible care has been taken in designing and putting together this communication. However, ROCKWOOL cannot issue any warranty relating to the completeness and accuracy of the information gathered, processing of information, results of the calculations, advice, example constructions and other results. All calculations, advice, example constructions and other results are approximations or typical values and will not bind ROCKWOOL. Please also note that the performance of the product in a construction or system strongly depends on the parameters of such a construction or system, such as but not limited to local soil conditions, the quality of the installation and other components. All of these parameters fall outside the scope of influence of ROCKWOOL. As a consequence, no warranty can be provided by ROCKWOOL as regards the performance of the product. All rights are reserved. No part of this communication may be reproduced or published by means of print, photo print, microfilm or any other means without ROCKWOOL's prior written permission. The contents of this communication are subject to amendment without notification. Although every care was taken during the preparation of this communication, ROCKWOOL cannot accept liability whatsoever for errors in this communication, nor for their consequences.

Please contact ROCKWOOL Noistop® for additional information or questions at +45 4656 1616.